



Talana

Beach Road
St. Saviour
Jersey
JE2 7PE

£950,000

FC211

FREEHOLD - Located end of terrace on Beach Road in St Saviour, this delightful Victorian terraced house offers a perfect blend of classic elegance and modern comfort. With 3 spacious bedrooms and two well-appointed bathrooms, this home is ideal for a growing family seeking both space and style.

As you step inside, you are greeted by a bright and airy atmosphere, enhanced by the thoughtful refurbishment carried out by the current owners. They have preserved many of the property's original features, including stunning Victorian fireplaces, beautiful wooden flooring, and exquisite stained leaded glass, which add character and warmth to the home.

The ground floor boasts two versatile reception rooms, a generous living room and second reception or dining room providing ample space for family gatherings and entertaining guests. The kitchen is both functional and stylish, making meal preparation a pleasure with direct access to the rear sunny south west garden. On the first floor (& half landing), you will find 3 generously sized double bedrooms, accompanied by a house bathroom & house shower room that caters to the needs of the family. The floor also benefits from an additional room utilised as a walk in closet that could be used alternatively as a study/office if required. There is an option to install a staircase to the loft area to create a fourth bedroom with ensuite. The space is already prepared with 2 Velux and walls dry-lined, all is needed is imagination.

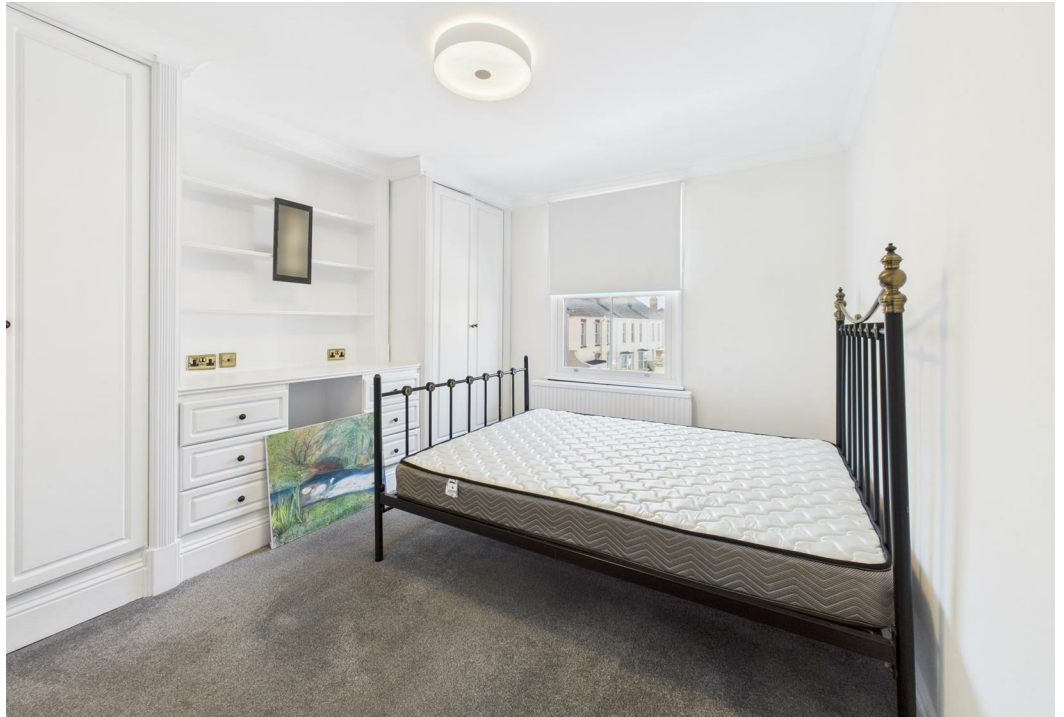
Outside, the south-west facing low maintenance garden is perfect for enjoying sunny afternoons or hosting barbecues

The property is within easy walking distance of Howard Davis Park, the beach, and the vibrant town centre, making it an ideal choice for those who appreciate both tranquillity and accessibility. This Victorian family home is a must-see for anyone looking to enjoy the very best of life in Jersey!













Ground Floor

Approximate total area⁽¹⁾

1468.74 ft²



Floor 1

(1) Excluding balconies and terraces

While every attempt has been made to ensure accuracy, all measurements are approximate, not to scale. This floor plan is for illustrative purposes only.

GIRAFFE360

Outside

Private, enclosed paved South West-facing garden—an ideal spot for relaxing or entertaining friends and family.

Parking Space

Close to all amenities

Services

All mains services (except gas)

Oil fired central heating

Directions

Talana is located at the top end of Beach Road near Howard Davis Park

Call us on

01534 888855

jersey@fineandcountry.com

www.fineandcountry.je

5 King Street, St Helier, Jersey, JE2 4WF

MONEY LAUNDERING REGULATION - Once an offer is accepted and negotiations for the purchase of a property are entered into, the prospective purchasers will be asked to produce photographic identification and proof of residency documentation, e.g. current utility bill and ID. This is in order for us to comply with the current Money Laundering Legislation.

Fine & Country Jersey advises prospective purchasers that we have prepared these sales particulars as a general guide only. We have not carried out a detailed survey, nor tested the services, appliances and specified fittings. Room sizes are approximate and rounded; they are taken between internal wall surfaces and therefore include cupboards/shelves etc, accordingly they should not be relied upon when purchasing fittings. Carpet, curtains/blinds and kitchen equipment, whether fitted or not, are deemed to be removable by the vendor unless specifically itemised within these particulars and/or within the property inventory. These particulars are supplied on the understanding that all negotiations are conducted through Fine & Country Jersey, their accuracy is not guaranteed nor do they form part of any contract.